



Transfer Made Easy

Welcome Transfer Students
and Community College
Faculty and Staff

The principal mission of WGU is to improve quality and expand access to post-secondary educational opportunities

1997

WGU established by a bi-partisan group of 19 U.S. governors.

2020

23 years of changing lives, and the lives of family members, one graduate at a time

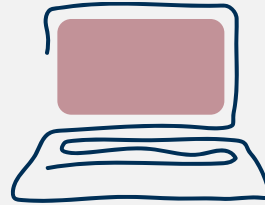
BACHELOR'S AND MASTER'S DEGREES



**COLLEGE OF
BUSINESS**



**COLLEGE OF
HEALTH PROFESSIONS**



**COLLEGE OF
INFORMATION TECHNOLOGY**



**TEACHERS
COLLEGE**

A UNIVERSITY THAT'S DIFFERENT IN MORE WAYS THAN ONE.



ONLINE

Total flexibility,
24/7 access.



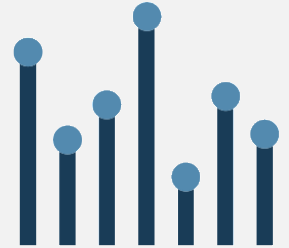
COMPETENCY BASED

Rewards mastery of
content, not class time.



ACCREDITED

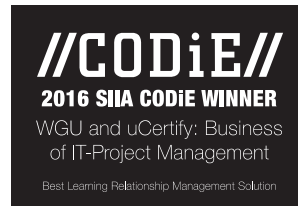
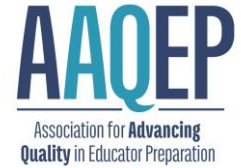
Awarded and praised
in national media.



NONPROFIT

Our top priority
is student success.

ACCREDITED, AWARDED, AND PRAISED.

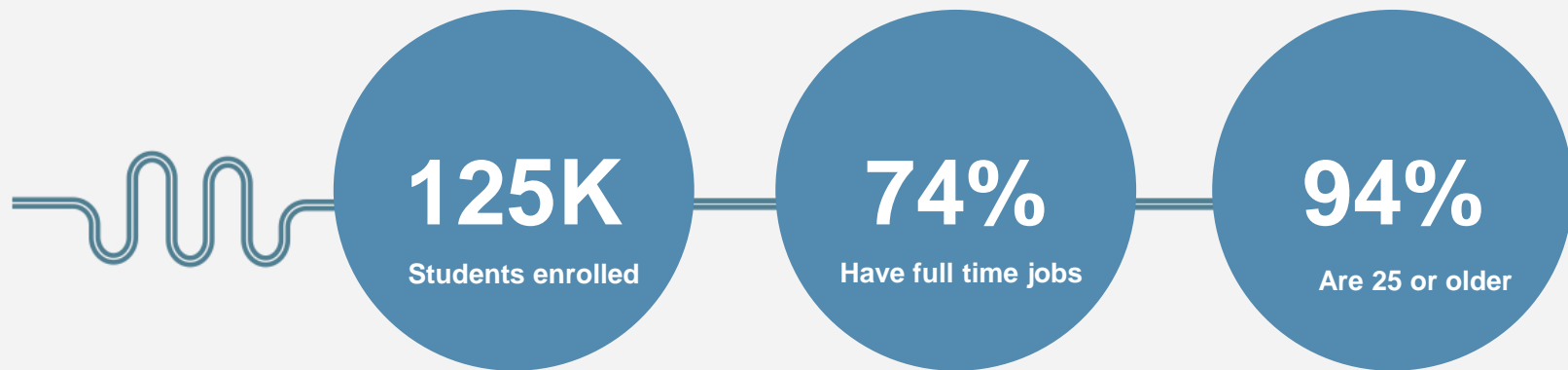


WE PARTNER WITH COMPANIES THAT VALUE
A MORE SKILLED WORKFORCE.



DESIGNED TO SERVE

AMERICA'S WORKING ADULTS



Over 200,000 graduates

FIVE WAYS WGU MAKES

A DEGREE MORE DOABLE



Competency-Based



Greater Flexibility



Mentor Guided



Comprehensive Support



Surprisingly Affordable

A PIONEER IN COMPETENCY-BASED LEARNING.

Students progress as quickly as they master the material.

- The focus is on learning, not seat time.
- Existing skills and knowledge help them advance faster.
- Move quickly through material they already know. Prove it and move on.
- Spend time learning the skills they still need to learn.
- Average time to completion (bachelor's degree): 2.5 years.
- Average time to completion (bachelor's degree) after transferring in an associate degree: 18 months

Joe
“Not a numbers
person”



4 weeks to complete

Susan
“Kind of a math
whiz”



2 weeks to complete

FIVE WAYS WGU MAKES

A DEGREE MORE DOABLE



Competency-Based



Greater Flexibility



Mentor Guided



Comprehensive Support



Surprisingly Affordable

FLEXIBLE ENOUGH TO FIT INTO BUSY LIVES

All courses and assessments online.

- Available 24/7.
- Access from your PCs, and tablets.
- Complete assessments at home or in your office anytime of day 7 days a week.
- No required postings or busy work.

Students work at their own pace.

- Not tied to a fixed course schedule.
- Not slowed down by other students.
- Must complete 12 CU's per term for Bachelor's degree
- Must complete 8 CU's per term for Master's degree

FIVE WAYS WGU MAKES

A DEGREE MORE DOABLE



Competency-Based



Greater Flexibility



Mentor Guided



Comprehensive Support



Surprisingly Affordable

FACULTY

Every student paired with a Program Mentor

- From day one until graduation.
- Personalized degree plan.
- One-on-one help and advice.
- Regular and frequent check-ins.

Learner Care Dashboard

- A visual tool for Program Mentors to view specific student indicators, the LCD was built to create timelier, more personalized faculty support of students.

On-demand access to specialized Course Instructors.

- Subject-matter experts for every course.
- Personal instruction when needed.

FIVE WAYS WGU MAKES

A DEGREE MORE DOABLE



Competency-Based



Greater Flexibility



Mentor Guided

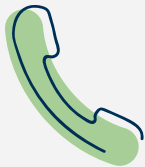


Comprehensive Support



Surprisingly Affordable

SUPPORT



TECHNICAL SUPPORT

Toll-free,
7 days a week.



PEER SUPPORT

Student online forums.
Social channels.
Student blogs.



SKILLS SUPPORT

Math lab.
Writing lab.



EMOTIONAL SUPPORT

Third-party
professional
counseling
available.



ALUMNI SUPPORT

Postgraduate
events & forums.
Career services.

FIVE WAYS WGU MAKES A DEGREE MORE DOABLE



Competency-Based



Greater Flexibility



Mentor Guided



Comprehensive Support



Surprisingly Affordable

AFFORDABLE

Flat-rate tuition.

- Six-month tuition covers unlimited courses. That is a 26-week term.
- Complete more courses without paying more.
- Can save both time and money.

•Undergraduate programs start	\$3,225
•Resource Fee.....	\$145

Tuition varies by college.

Scholarships, Pell Grants, federal loans.
Employer tuition assistance, payment plans.
Half the national average rate of student loan defaults.

TRANSFER OPPORTUNITIES

Bachelor's degree

holders generally meet all lower division requirements and may meet upper division courses

Associate degree

holders typically clear most of the upper-division GE requirements

Evaluating official

transcripts is completed by the bursar's office and is free of charge.

Foreign degree

coursework may be accepted after transcript review

Some military and public service

courses may be accepted after review

A close-up, high-contrast image of an owl's face, rendered in a dark blue monochrome. The owl's large, round eyes are prominent, and its feathers show intricate detail. The image serves as a background for the text.

OUR COLLEGES

College of Business
College of Health Professions
College of Information Technology
Teachers College

COLLEGE OF BUSINESS

- WGU praised by *Wall Street Journal*, *Bloomberg Businessweek*, *Forbes*, *Harvard Business Review*, and *CNN*.
- Redeveloped a market-relevant undergraduate business core using innovative skills mapping and input from leading industry experts and employers.
- 97% of employers surveyed said WGU grads come to work prepared for their jobs.



COLLEGE OF BUSINESS

Bachelor's Degrees

B.S. Business Administration – Accounting
B.S. Business Administration – Business Management
B.S. Business Administration – Healthcare Management
B.S. Business Administration – Human Resource Mngt
B.S. Business Administration – Information Technology
B.S. Business Administration – Marketing

Master's Degrees

Master of Business Administration
MBA Healthcare Management
MBA Information Technology Management
M.S. Management and Leadership
M.S. Accounting



COLLEGE OF HEALTH PROFESSIONS

- WGU's Nursing students outscore the national average on NCLEX licensing exam
 - 96.7% to 91.2%
- First online, nonprofit, competency-based College of Health Professions.
- Curriculum reflects current national and state standards.
- BS Health Information Management degree is accredited by the Commission on Accreditation for Health Informatics and Information Management Education.
- Launched our first micro-credential, the Medical Coding Career Accelerator Program, in partnership with SEIU- UHW.



COLLEGE OF HEALTH PROFESSIONS

Bachelor's Degrees

B.S. Nursing (RN-to-BSN online)
B.S. Nursing (Prelicensure) *Available in CA, TX, FL, IN & UT*
B.S. Health Information Management
B.S. Health Services Coordination

Master's Degrees

M.S. Nursing – Education (RN or BSN-to-MSN program)
M.S. Nursing – Leadership and Management (RN or BSN-to-MSN)
M.S. Nursing – Nursing Informatics (RN or BSN-to-MSN program)
Master of Health Leadership
MBA Healthcare Management *(from College of Business)*



INFORMATION TECHNOLOGY COLLEGE

- Bachelor's programs incorporate certifications from CIW, CCNA, MCSA, OCP, CompTIA, and more.
- Program member of Microsoft IT Academy.
- Developed new IT MicroBachelors program on edX to let students earn work-ready credentials along the path to a degree.



COLLEGE OF INFORMATION TECHNOLOGY

Bachelor's Degrees

B.S. Cloud Computing
B.S. Computer Science
B.S. Cybersecurity and Information Assurance
B.S. Data Management/Data Analytics
B.S. Information Technology
B.S. Network Operations and Security
B.S. Software Development

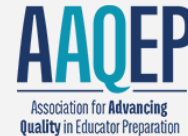
Master's Degrees

M.S. Cybersecurity and Information Assurance
M.S. Data Analytics
M.S. Information Technology Management



TEACHERS COLLEGE

- The top university in the nation in educating K–12 math and science teachers.
- Top-rated by the National Council on Teacher Quality (NCTQ) for quality and value.
- Accredited by the National Council for the Accreditation of Teacher Education (NCATE).
- Our college is the first in the country to receive full accreditation from both the Council for the Accreditation of Educator Preparation (CAEP) and AAQEP.
- WGU is working with new state and school districts to offer a series of microcredentials for paraeducators - October 2020.



DEGREES OFFERED – PRE-LICENSURE

Bachelor's Degrees

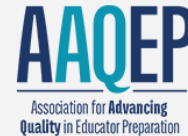
Elementary Education – B.A.
Special Education and Elementary Education (Dual Licensure) – B.A.
Special Education (Mild-to-Moderate) – B.A.
Mathematics Education (Middle Grades) – B.S.
Mathematics Education (Secondary) – B.S.
Science Education (Middle Grades) – B.S.
Science Education (Secondary Chemistry) – B.S.
Science Education (Secondary Physics) – B.S.
Science Education (Secondary Biology Science) - B.S.
Science Education (Secondary Earth Science) - B.S.

Master's Degrees

Teaching, Elementary Education – M.A.
Teaching, English Education (Secondary) - M.A.
Teaching, Mathematics Education (Middle Grades) – M.A.
Teaching, Mathematics Education (Secondary) – M.A.
Teaching, Science Education (Secondary) – M.A.

Post-Baccalaureate

Elementary Education



DEGREES OFFERED – POST-LICENSURE

Bachelor's Degrees

Curriculum and Instruction – M.S.
Special Education (K-12) – M.S.
Instructional Design – M.Ed.
Learning and Technology – M.Ed.
Educational Leadership – M.S.
English Language Learning (PreK-12) – M.A.
Endorsement Preparation, English Language Learning (PreK-12)

Master's Degrees

Mathematics Education (K-6) – M.A.
Mathematics Education (Middle Grades) – M.A.
Mathematics Education (Secondary) – M.A.
Science Education (Middle Grades) - M.A.
Science Education (Secondary Chemistry) - M.A.
Science Education (Secondary Physics) – M.A.
Science Education (Secondary Biology Science) – M.A.
Science Education (Secondary Earth Science) – M.A.





WE LOOK FORWARD TO CONNECTING

Gloria Bruce
Gloria.bruce@wgu.edu
www.WGU.edu